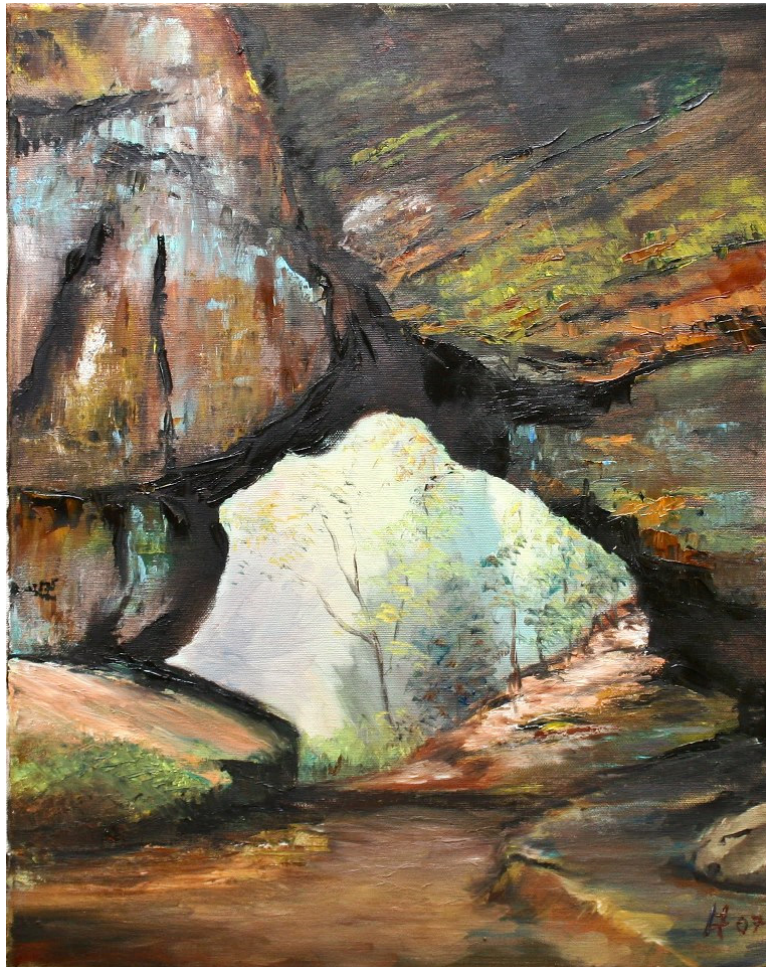


HARTWIG BARTE-HANSSEN

Lux aeterna

(op. 104)



for Organ

EDITED BY TORD SIEMEN

Lux aeterna

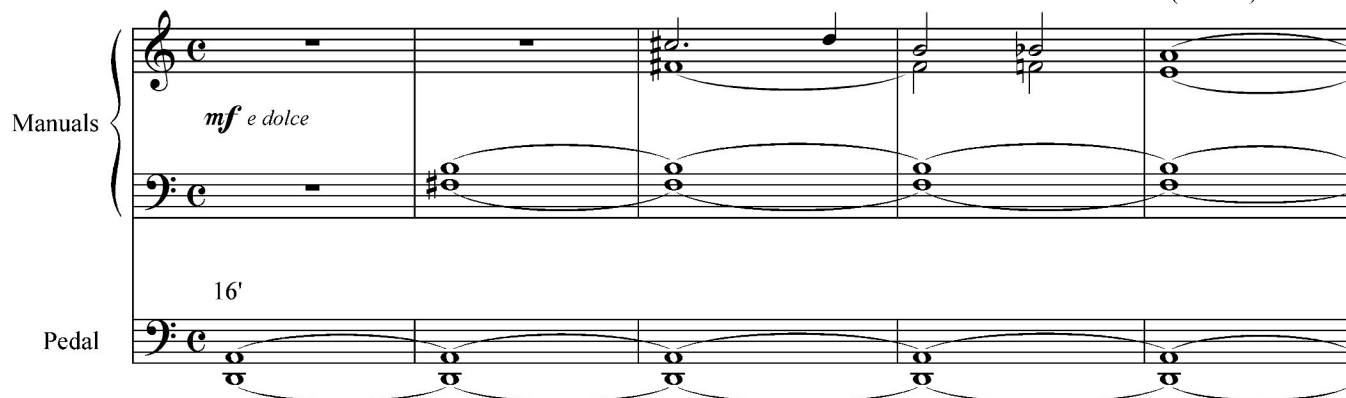
(op.104)

Hartwig Barte-Hanssen
(*1961)

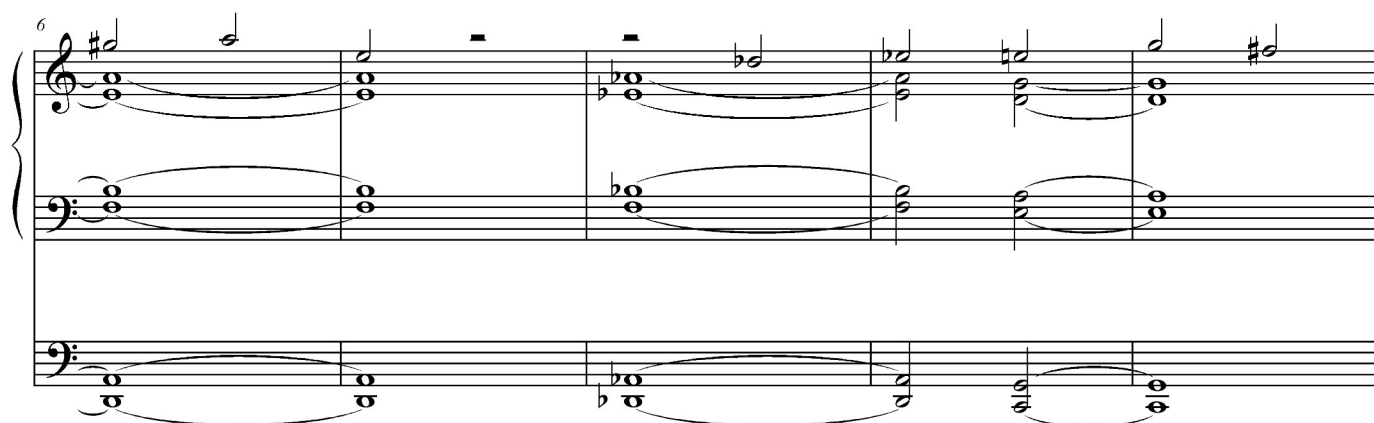
Adagio assai misterioso

Manuals *mf e dolce*

Pedal 16'



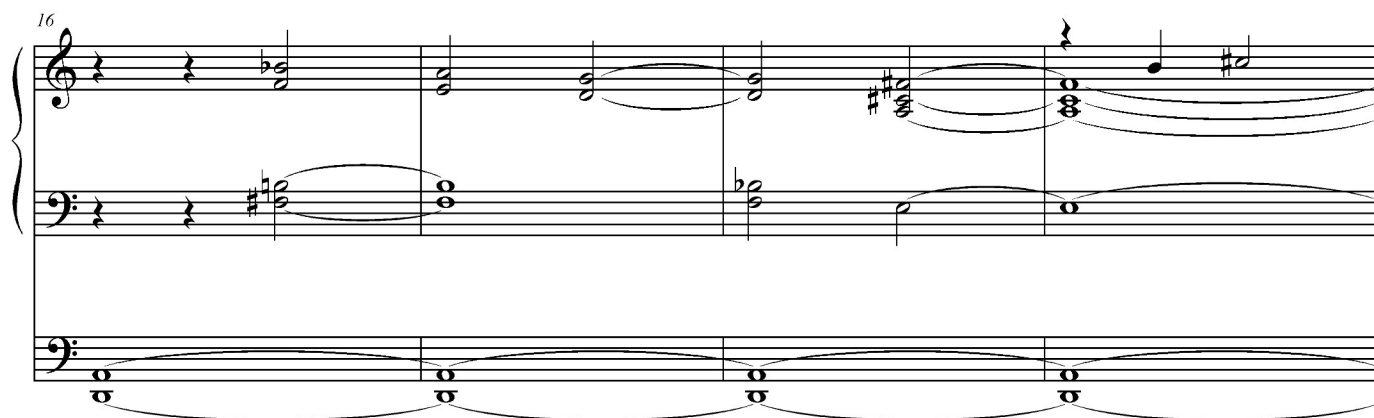
6



11



16



20

Measures 20-24 of the musical score. The system consists of two staves (treble and bass clef) and a grand staff (treble and bass clef). The key signature is one sharp (F#). The time signature is 4/4. The music features a melodic line in the treble clef and a harmonic accompaniment in the bass clef. The grand staff shows a more complex texture with multiple voices.

25

Measures 25-28 of the musical score. The system consists of two staves (treble and bass clef) and a grand staff (treble and bass clef). The key signature is one sharp (F#). The time signature is 4/4. The music continues with a melodic line in the treble clef and a harmonic accompaniment in the bass clef. The grand staff shows a more complex texture with multiple voices.

29

Measures 29-32 of the musical score. The system consists of two staves (treble and bass clef) and a grand staff (treble and bass clef). The key signature is one sharp (F#). The time signature is 4/4. The music continues with a melodic line in the treble clef and a harmonic accompaniment in the bass clef. The grand staff shows a more complex texture with multiple voices.

33

Measures 33-36 of the musical score. The system consists of two staves (treble and bass clef) and a grand staff (treble and bass clef). The key signature is one sharp (F#). The time signature is 4/4. The music continues with a melodic line in the treble clef and a harmonic accompaniment in the bass clef. The grand staff shows a more complex texture with multiple voices. A *rit.* (ritardando) marking is present in measure 34.

Dedicated to the artist Hannelore Käseberg.
She painted the oil painting „Light at the end of the tunnel" honored her husband, who past away in 2006.

EDITED BY TORD SIEMEN

www.hartwig-barte-hanssen.de