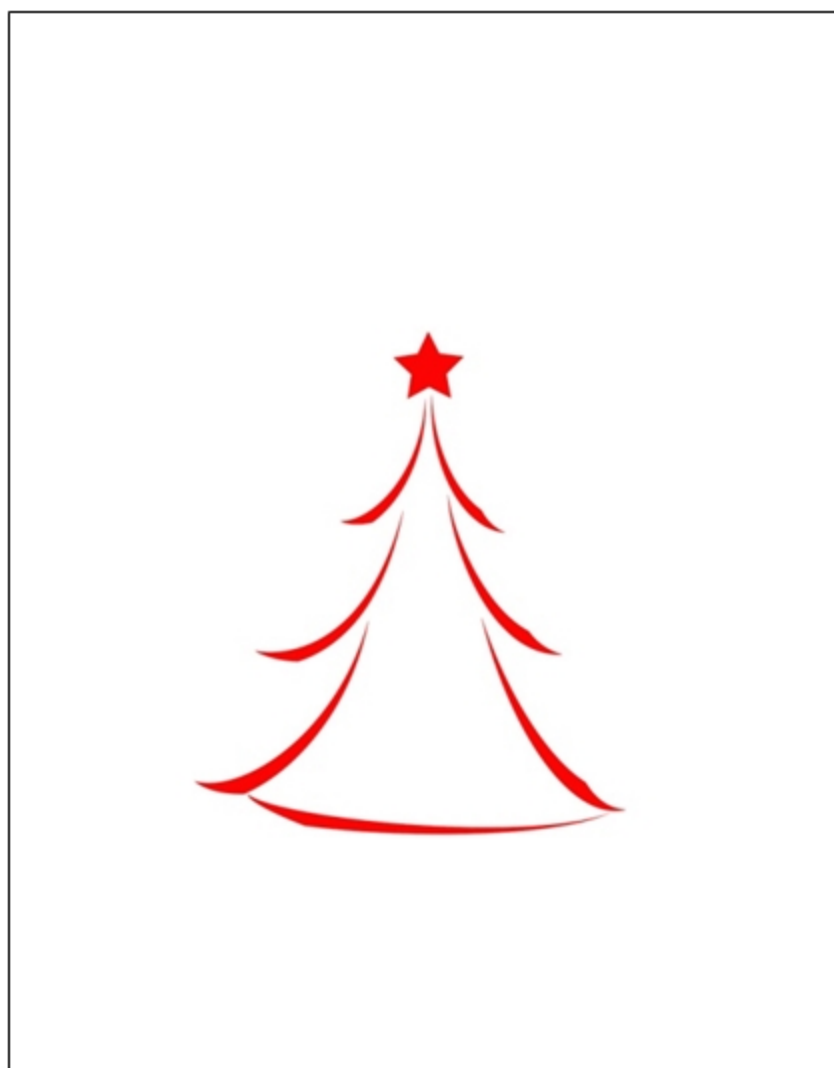


HARTWIG BARTE-HANSEN

Plattdüütsch Wiehnachtsoratorium

APPENDIX

(op. 145)



VIOLINE I

EDITED BY TORD SIEMEN

Plattdüütsch Wiihnachtsoratorium

Appendix

(op. 145)

Hartwig Barte-Hanssen (* 1961)

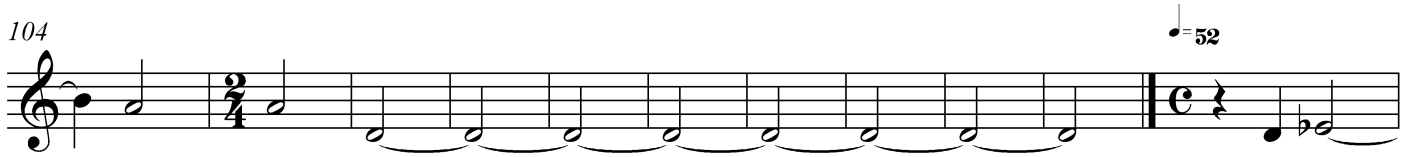
Violine I

The musical score for Violin I consists of nine staves of music. The first staff (measures 1-10) is in common time (C) with a tempo marking of quarter note = 72. It features a sequence of rests: 10 measures, then a 3/4 time signature change for 6 measures, then common time for 2 measures, and finally a 3/4 time signature change for 8 measures. The second staff (measures 11-27) starts at measure 28 with a tempo marking of quarter note = 84. The third staff (measures 28-35) starts at measure 36. The fourth staff (measures 36-42) starts at measure 43 with a tempo marking of quarter note = 76. The fifth staff (measures 43-52) starts at measure 53. The sixth staff (measures 53-61) starts at measure 62. The seventh staff (measures 62-71) starts at measure 72. The eighth staff (measures 72-84) starts at measure 79. The ninth staff (measures 85-92) starts at measure 85. The score includes various time signatures (C, 3/4, 2/4) and musical notations such as rests, notes, and slurs.

95



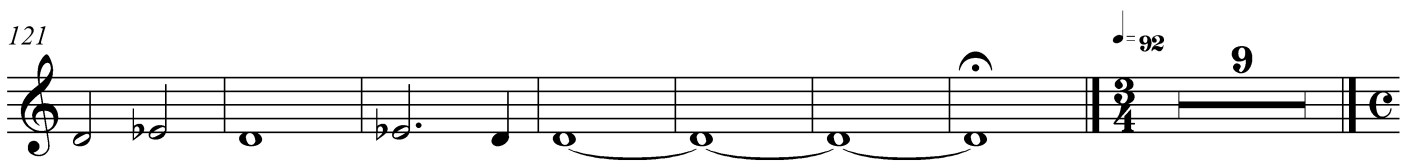
104



115



121



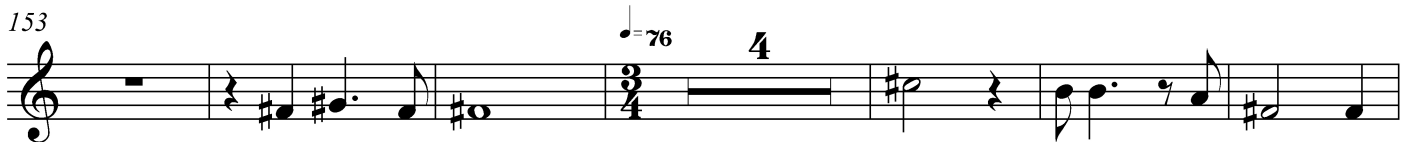
137 $\text{♩} = 84$



144



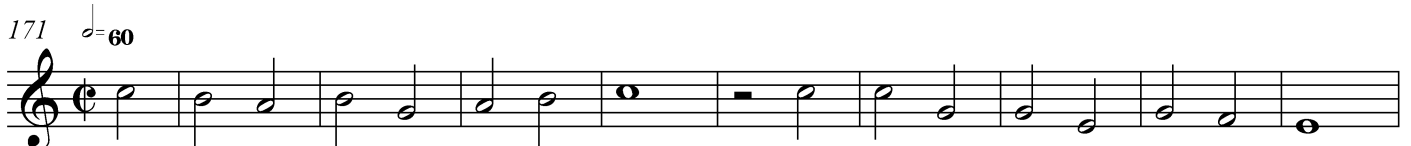
153



163



171 $\text{♩} = 60$



181



191



201



211



221





*Uraufgeführt am 15. Dezember 2018,
Stadtkirche St. Peter zu Krempe*

EDITED BY TORD SIEMEN

www.hartwig-barte-hanssen.de