

HARTWIG BARTE-HANSEN

Santa Lucia-Kantate II

(op. 146)



*für Solosopran,
Kinderchor, 3-4stg. Chor,
Orgel und Streichorchester*

VIOLA

EDITED BY TORD SIEMEN

Santa Lucia-Kantate II

Viola

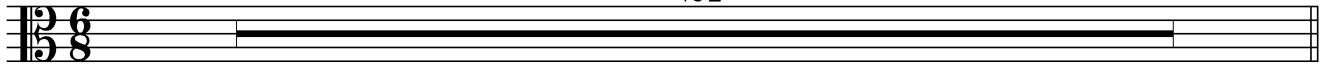
(op. 146)

Hartwig Barte-Hanssen (*1961)

Moderato (♩ = c. 96)

Fine

21



22



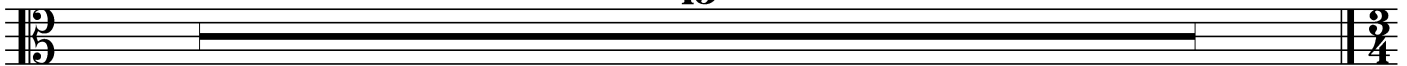
30



35 **Adagio**

13

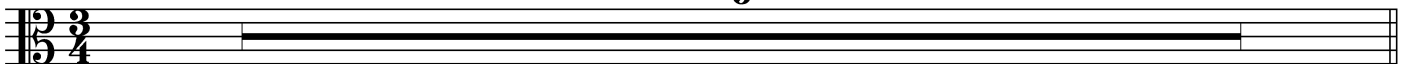
D.C. al Fine



1. Santa Lucia-Lied

48

5



53

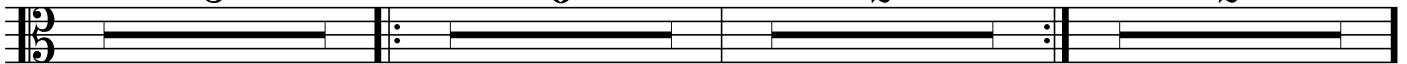
8

6

1. 2

2

2. 2



71

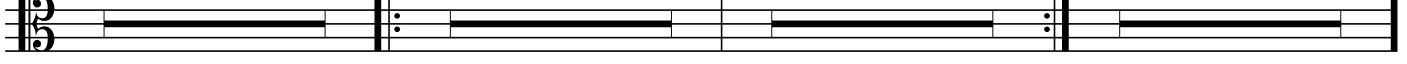
8

6

1. 2

2

2. 2



89

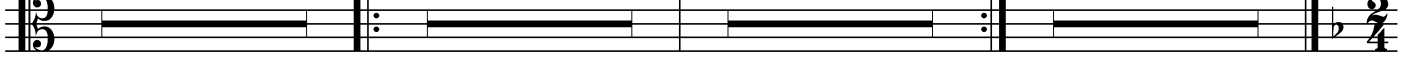
8

6

1. 2

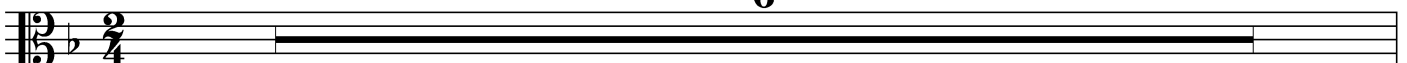
2

2. rit. 2



107

6



113

121

rit.

Moderato (♩ = c. 96)

129

6

139

148

Andante (♩ = c. 72)

160

9

2. Nun komm der Heiden Heiland

172

14

186

24

3. Kommt und laßt uns Christum ehren

210

214

9

223

9

234

9

245

9

256

rit.

4. Heilige Lucia, komm ...

260

Andante (♩ = c. 69)

266

270

276

283

290

297

304

311

4. Glockenkanon

318 **Andante** (♩ = c. 92)

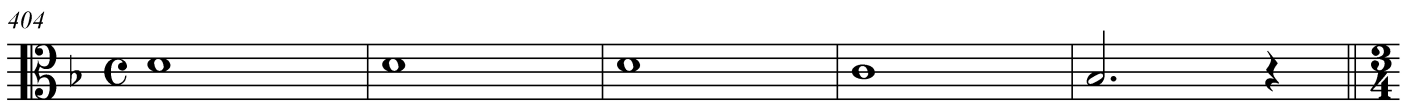
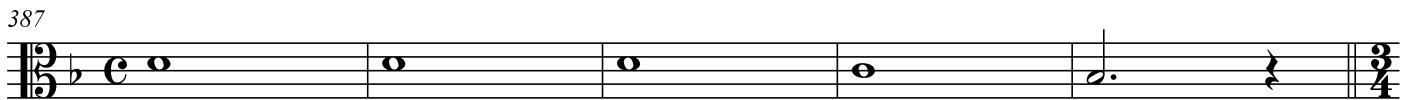
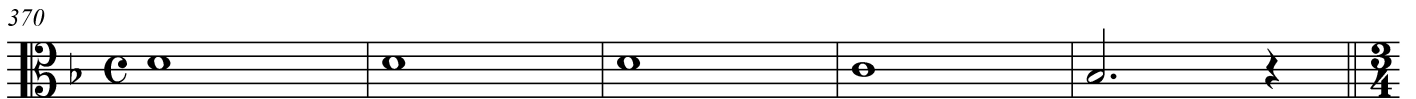
20

338 *f*

344 Wiederholung mehrfach

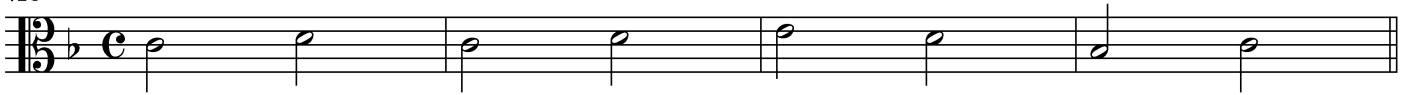
5. Ave Maria

350 **Andante** (♩ = c. 69)

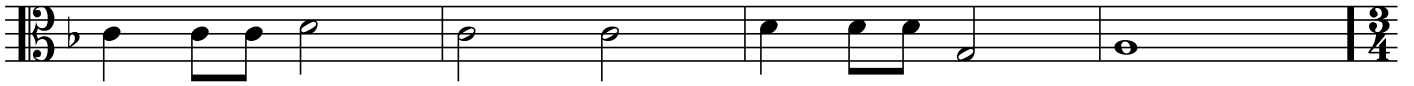


6. Glans över sjö

421 **Andante** (♩ = c. 63)



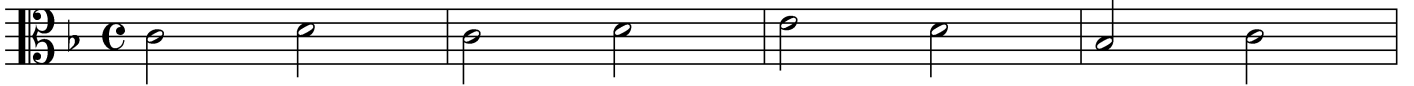
486



490



498 *ff*



502



510



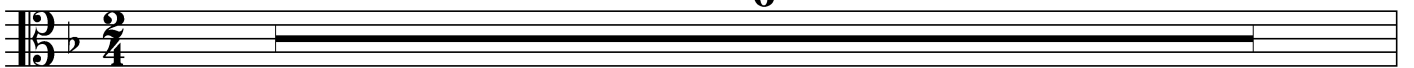
517 *rit.*



7. Kanon: Freude ist in unserm Heim

521

6



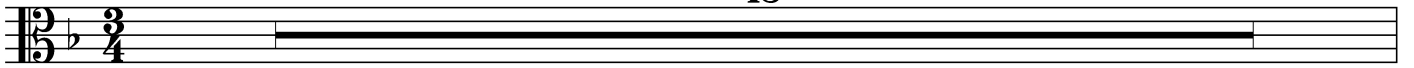
527



8 Mitnatt råder

533 Allegro (M.M. ♩ = c. 120)

18



551



Santa Lucia-Kantate II

8

561



569



577



587



595



603



613



621



629



639



647

655

665 **18**

683

693

701

709

713

719

727

Santa Lucia-Kantate II

10
735

A single musical staff in bass clef, 2/4 time signature. The melody begins with a quarter rest, followed by a series of quarter notes: Bb, G, F, G, A, Bb, A, G, F, E. The next measure contains a quarter note D, followed by a dotted quarter note C and a half note Bb.

745

18

A single musical staff in bass clef, 2/4 time signature. The staff contains a solid black bar spanning the entire measure, indicating a rest.

763

A single musical staff in bass clef, 2/4 time signature. The melody starts with a quarter rest, followed by quarter notes G, F, G, A, Bb, A, G, F, E. The next measure contains a sixteenth-note triplet: G, A, Bb, followed by another sixteenth-note triplet: A, Bb, C. The following measure contains a sixteenth-note triplet: Bb, C, D, followed by another sixteenth-note triplet: C, Bb, A. The measure concludes with a dotted quarter note G and a half note F.

773

A single musical staff in bass clef, 2/4 time signature. The melody begins with a quarter rest, followed by quarter notes G, F, G, A, Bb, A, G, F, E. The next measure contains a dotted quarter note D and a half note C. The following measure contains a dotted quarter note Bb and a half note A. The measure concludes with a dotted quarter note G and a half note F.

781

A single musical staff in bass clef, 2/4 time signature. The melody consists of quarter notes G, F, G, A, Bb, A, G, F, E. The next measure contains a dotted quarter note D and a half note C. The following measure contains a dotted quarter note Bb and a half note A. The measure concludes with a dotted quarter note G and a half note F.

789

A single musical staff in bass clef, 2/4 time signature. The melody begins with a quarter rest, followed by quarter notes G, F, G, A, Bb, A, G, F, E. The next measure contains a quarter note D, followed by a dotted quarter note C and a half note Bb.

799 *ff*

A single musical staff in bass clef, 2/4 time signature. The melody starts with a quarter rest, followed by quarter notes G, F, G, A, Bb, A, G, F, E. The next measure contains a dotted quarter note D and a half note C. The following measure contains a dotted quarter note Bb and a half note A. The measure concludes with a dotted quarter note G and a half note F.

807

A single musical staff in bass clef, 2/4 time signature. The staff contains a quarter rest, followed by a dotted half note G.

808

A single musical staff in bass clef, 2/4 time signature. The melody consists of quarter notes G, F, G, A, Bb, A, G, F, E. The next measure contains a dotted quarter note D and a half note C. The following measure contains a dotted quarter note Bb and a half note A. The measure concludes with a dotted quarter note G and a half note F.

815

A single musical staff in bass clef, 2/4 time signature. The melody consists of quarter notes G, F, G, A, Bb, A, G, F, E. The next measure contains a dotted quarter note D and a half note C. The following measure contains a dotted quarter note Bb and a half note A. The measure concludes with a dotted quarter note G and a half note F.

rit.

820

A single musical staff in bass clef, 2/4 time signature. The melody begins with a quarter rest, followed by a dotted quarter note G, a dotted quarter note F, and a dotted quarter note E. The measure concludes with a dotted quarter note D and a half note C.

9. Jungfru Maria

825

830

837

846

855

864

873

882

891

10. Gelobet seist du, Jesu Christ

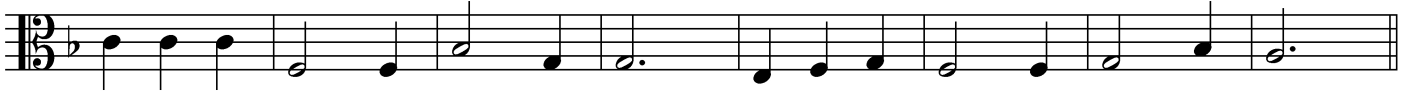
902



906



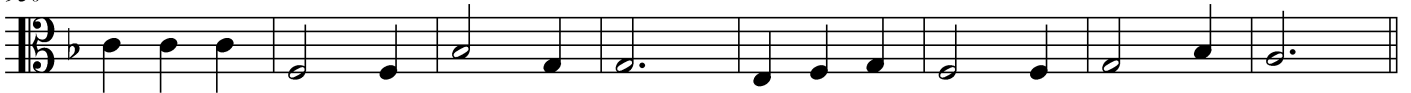
914



922



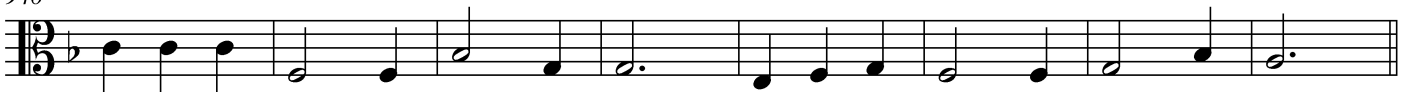
930



938



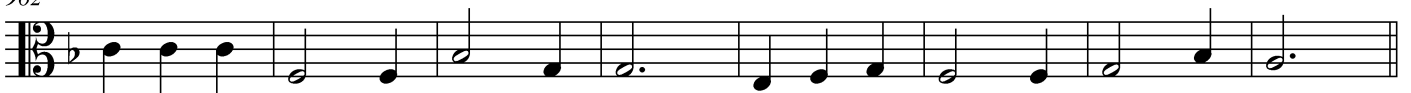
946



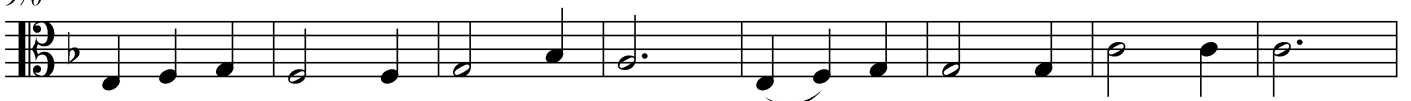
954



962



970



978

986

994

1002

1010 *rit.*

Maestoso (♩ = c. 60)

1018

11. Schlusschoral

1025 *fff*

1030 *rit.*



*Uraufgeführt am 13. Dezember 2019,
St. Peter-Kirche zu Krempe*

EDITED BY TORD SIEMEN

www.hartwig-barte-hanssen.de